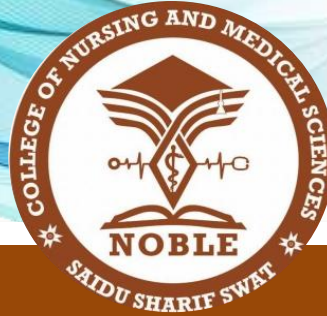




PROSPECTUS



NOBLE COLLEGE OF NURSING AND MEDICAL SCIENCES

Department of BioMedical Engineering

Saidu Sharif, Swat.



www.noble.edu.pk



info@noble.edu.pk



info.noblecollege@gmail.com



+92 335 9503355



بِسْمِ اللَّهِ الرَّحْمَنِ الرَّحِيمِ



DISCLAIMER

This prospectus provides information for applicants seeking admission to Noble College of Nursing and Medical Sciences, Department of BioMedical Engineering, in DAE Biomedical Technology 03 Years program. Details are subject to change as per KPBTE and College policies without prior notice. The College reserves the right to amend any information at any time, and such changes cannot be legally challenged.

Table of Contents

S.No	Description	Page No
1	Director of Noble college Message	3
2	Vice Chairman of Noble college Message	4
3	Principal of Noble college Message	5
4	Introduction	6
5	Vision, Mission, Future Plans	7
6	Accreditation	8
7	DAE 03 Years Program - Curriculum	9 - 11
9	Eligibility Criteria and Merit Determination	12
10	Fee Structure	13
11	Learning Facilities / Labs	14-22
12	Admission Policy	23
13	General Policies	24-30
14	Dress Code	31
15	Fee Payment and Scholarship Policy	32-33
16	Noble Library Policy	34
17	Committees and Disciplinary Policy	35-37
18		

Director / Chairman BOGs Message



Biomedical Technology is a vital and rapidly growing field that bridges healthcare and engineering. Biomedical technologists ensure the safe and efficient functioning of medical equipment, playing an essential role in patient diagnosis, treatment, and care.

Recognizing the increasing need for qualified professionals in this sector, Noble College of Nursing and Medical Sciences, Swat, has established the DAE in Biomedical Technology program to provide quality education and practical training in this specialized area.

I commend the efforts of our dedicated team in developing this program and assure the continued support of the Board for its growth.

I warmly welcome all students to this rewarding profession and wish them success in their educational journey.

Said Ali Shah

Masters of Science in Telecommunication Engineering,
Preston University Islamabad Campus

Vice Chairman's Message



Biomedical Technology is an emerging field that plays a pivotal role in advancing modern healthcare. Skilled biomedical technologists are essential in maintaining, innovating, and ensuring the reliability of medical equipment that supports life-saving treatments.

At Noble College of Nursing and Medical Sciences, Swat, we are dedicated to developing competent and responsible biomedical professionals equipped with both technical expertise and ethical values. Our goal is to empower students with the knowledge and skills required to meet the growing challenges of healthcare technology.

I warmly welcome all students to the Department of Biomedical Technology and pray that this institution becomes a center where innovation meets integrity, and learning leads to excellence. Ameen.

Roshan Ali

M.Phil. Microbiology,
MSc. Microbiology,
BSc. MLT (Medial lab Technology)



Principal's Message

Noble College of Nursing & Medical Sciences, Swat, proudly extends its commitment to healthcare education by introducing the DAE in Biomedical Technology program. This initiative aims to prepare skilled technologists who can support and advance medical care through innovation, precision, and technical expertise.

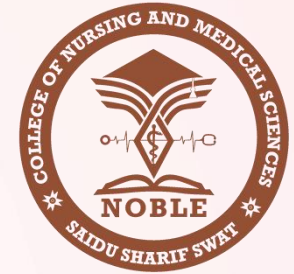
Our Biomedical Technology students benefit from well-equipped laboratories, modern computer facilities with reliable internet, and practical exposure through partnerships with hospitals and clinical settings, including proximity to Saidu Group of Teaching Hospitals (SGTH). Supported by experienced faculty and a progressive learning environment, we strive to set new benchmarks in biomedical education and applied health sciences in Pakistan.

I warmly welcome all aspiring students to this dynamic field and wish them success in their academic and professional pursuits.

SIKANDAR HABIB

MS Engineering Management (Abasyn
University Islamabad Campus)

BSc Electrical Engineering (Northern University)



INTRODUCTION TO NOBLE COLLEGE OF NURSING AND MEDICAL SCIENCES

Noble College of Nursing & Medical Sciences, Swat, located in Haji Abad behind Saidu Group of Teaching Hospitals (SGTH), proudly offers the DAE in Biomedical Technology program—an initiative designed to meet the growing demand for skilled professionals in medical equipment technology and healthcare engineering.

The Department of Biomedical Technology at Noble College of Nursing & Medical Sciences, Swat, offers a comprehensive DAE program designed to prepare skilled professionals capable of maintaining, operating, and innovating medical equipment essential to modern healthcare. With well-equipped laboratories, computer facilities, and practical training opportunities at Saidu Group of Teaching Hospitals (SGTH), the program combines technical expertise with real-world experience. Our mission is to produce competent, ethical, and forward-thinking biomedical technologists who will contribute to advancing healthcare technology in Pakistan and beyond.



VISION

The vision of Noble College of Nursing and Medical Science is to become a global leader in healthcare education. We aim to achieve this by producing skilled and compassionate healthcare professionals, promoting excellence and innovation. Our graduates will be well-trained and caring individuals who will make a positive impact on the lives of patients and communities worldwide. Together, we aspire to build a healthier world.

MISSION

At Noble College of Nursing and Medical Science, our mission is to train healthcare professionals. We empower students with knowledge, skills, and compassion to deliver exceptional care. We're dedicated to excellence, innovation, and making a positive impact on communities.

FUTURE PLANS

Our goal is to lead in healthcare education, producing exceptional professionals, driving medical innovation, and making a positive global impact. Also, to introduce BS and MS programs in Biomedical Technology soon to prepare advanced professionals and leaders for the healthcare sector.

WHY NOBLE COLLEGE OF NURSING AND MEDICAL SCINECES

Noble College of Nursing and Medical Sciences has qualified faculty members with diverse experience.

Rigorous Curriculum: Offering Advanced, Honors, and Advanced Placement classes for a comprehensive education.

Real-World Experience: Partnerships with hospitals and labs provide hands-on learning and internship opportunities.

Modern Facilities: Noble College takes pride in its high-class designed building with a sophisticated structure to provide an ideal learning environment.

Noble College of Nursing and Medical Sciences will offer competitively paid Internship to its students.

REGISTRATION AND ACCREDITATION

Noble College of Nursing and Medical Sciences is registered with:

1. Khyber Pakhtunkhwa Board of Technical and Commerce Education (KPBTE)
2. Higher Education Regulatory Authority (HERA)
3. Pakistan Nursing and Midwifery Council (PNMC)
4. Affiliated with Khyber Medical University, Peshawar.
5. Khyber Pakhtunkhwa Health Foundation.
6. Saidu Group of Teaching Hospitals (SGTH)

Year 1 - DAE Biomedical - Curriculum

S.No	Subject Name	Code	PR/T	Total Marks
1	Islamyat / Ethics-A and Pak.Studies	GEN:111	T	50
2	English	ENG:112	T	100
3	Mathematics A	MATH:123(A)	T	75
4	Mathematics B	MATH:123(B)	T	75
5	Applied Physics	PH:122(Th)	T	50
6	Applied Physics	PH:122(Pr)	P	50
7	Applied Chemistry	CH:112(Th)	T	50
8	Applied Chemistry	CH:112(Pr)	P	50
9	Computer Application	Comp:122(Th)	T	50
10	Computer Application	Comp:122(Pr)	P	50
11	Electrical Essential & Networks A	ELT:114(Th-A)	T	75
12	12	Electrical Essential & Networks B	ELT:114(Th-B)	T
13	13	Electrical Essential & Networks	ELT:114(Pr)	P
14	14	Electronics Components, Application & Assembly	BMI:112(Pr)	P
15	15	Fundamentals of Bio- Medical Equipment & Interfaces	BM:112(Th)	T
16	16	Fundamentals of Bio- Medical Equipment & Interfaces	BM:112(Pr)	P
17	17	Machine Shop, Metal work & Pipe	BMI:123(MMP)	P
18	18	Technical Drawing	BMI:123(TD)	P
19	19	Electrical Wiring	BMI:123(EW)	P
20	20	Mutal e Quran Hakeem / Ethics-B	MQH/ETH	T

Year 2 - DAE Biomedical - Curriculum

S.No	Subject Name	Code	PR/T	Total Marks
1	Islamyat / Ethics-A and Pak.Studies	GEN:211	T	50
2	Applied Mathematics A	MATH:233(A)	T	75
3	Applied Mathematics B	MATH:233(B)	T	75
4	Business Communication	MGM:211	T	50
5	Industrial Economics	MGM:221	T	50
6	Measurement Instruments	ELT:233(Th)	T	100
7	Measurement Instruments	ELT:233(Pr)	P	50
8	Solid State Electronics	BMI:214(Th)	T	100
9	Solid State Electronics	BMI:214(Pr)	P	100
10	Digital Electronics	BMI:222(Th)	T	50
11	Digital Electronics	BMI:222(Pr)	P	50
12	Electronics Machine & Industrial Electronics	BMI:233(Th)	T	100
13	Electronics Machine & Industrial Electronics	BMI:233(Pr)	P	50
14	Operational Amplifier & Application	BMI:242(Th)	T	50
15	Operational Amplifier & Application	BMI:242(Pr)	P	50
16	Patient Safety & Ultrasound Radiation Physics	BMI:212(T)	T	50
17	Patient Safety & Ultrasound Radiation Physics	BMI:212(Pr)	P	50
18	X-Ray & Film Processing Equipment	BMI:223(Th)	T	100
19	X-Ray & Film Processing Equipment	BMI:223(Pr)	P	50
20	Mutal e Quran Hakeem / Ethics-B	MQH/ETH	T	50

Year 3 - DAE Biomedical - Curriculum

S.No	Subject Name	Code	PR/T	Total Marks
1	Islamiat /Pak. Study	GEN:311	T	50
2	Industrial Management & Human Relations	MGM:311	T	50
3	Apto Electronics Fiber Optics and Laser	BMI:312(Th)	T	50
4	Apto Electronics Fiber Optics and Laser	BMI:312(Pr)	P	50
5	Fundamentals of Micro Processor and Interfacing Tec	BMI:324(Th)	T	100
6	Fundamentals of Micro Processor and Interfacing Tec	BMI:324(Pr)	P	100
7	Medical Terminology, Human Anatomy and Physiology	BMI:311	T	50
8	Sterilization Autoclaves and Medical gases Vacume System	BM:322(Th)	T	50
9	Sterilization Autoclaves and Medical gases Vacume System	BM:322(Pr)	P	50
10	ECG and Ultrasound Equipments	BM:334(Th)	T	100
11	ECG and Ultrasound Equipments	BM:334(Pr)	P	100
12	Bio-Chemistry and Clinic Lab Equipment	BM:342(Th)	T	50
13	Bio-Chemistry and Clinic Lab Equipment	BM:342(Pr)	P	50
14	Therapio Bio-Medical Equipments	BM:354(Th)	T	100
15	Therapio Bio-Medical Equipments	BM:354(Pr)	P	100
16	Bio-Medical Equip. Maintenance Manag. and App. of Comp. in Bio-Medical Engg:	BM:361	T	50

ELIGIBILITY CRITERIA FOR ADMISSION IN DAE BIOMEDICAL TECHNOLOGY PROGRAM

- Qualification: SSC with 50% marks minimum (Physics, Chemistry & Biology as compulsory subjects).
- Male and female between age 16-30 years.
- College entrance test.
- Qualifying on Merit list and interview.



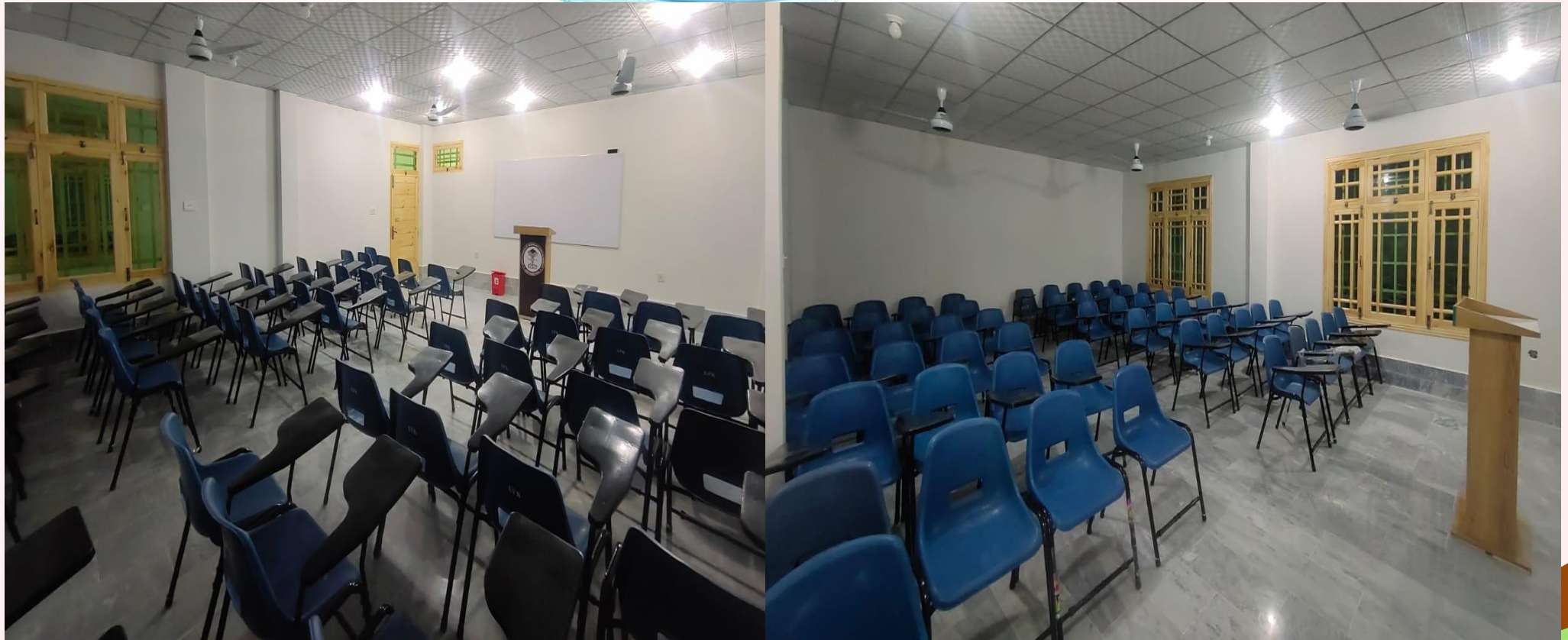
FEE STRUCTURE FOR DAE BIOMEDICAL 03 YEARS PROGRAM

S. No.	Description of Fee	Amount
1	Admission Fee (One time only)	20,000/-
2	Tuition Fee (per Semester)	50,000/-
3	Labs Fee (per Semester)	5,000/-
4	Examination Fee (Per Semester)	5,000/-
5	KPBTE Registration Fee	As per KPBTE
6	Clinical Placement Fee (Per Semester)	5,000/-

Note: Fee Structure may change as per Policy of the College and KPBTE.

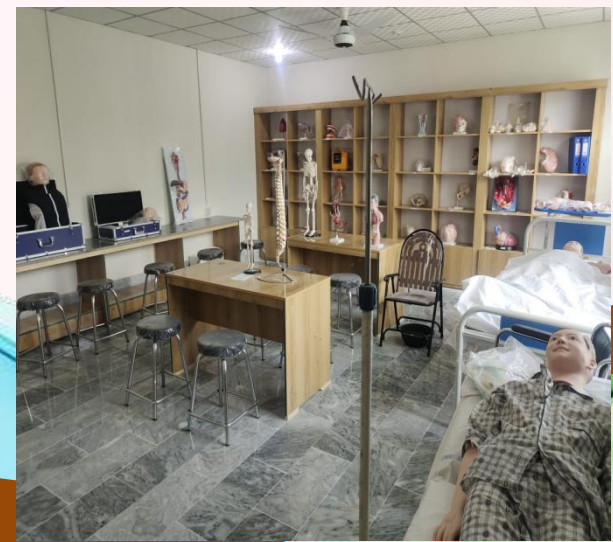
LEARNING FACILITIES (LECTURER HALLS)

All lecture halls are fully equipped with Multimedia, Whiteboards and other teaching facilities



SKILL LAB

Skill Lab is an integral part of clinical learning where nursing students learn a variety of Lab based skills.



LIBRARY

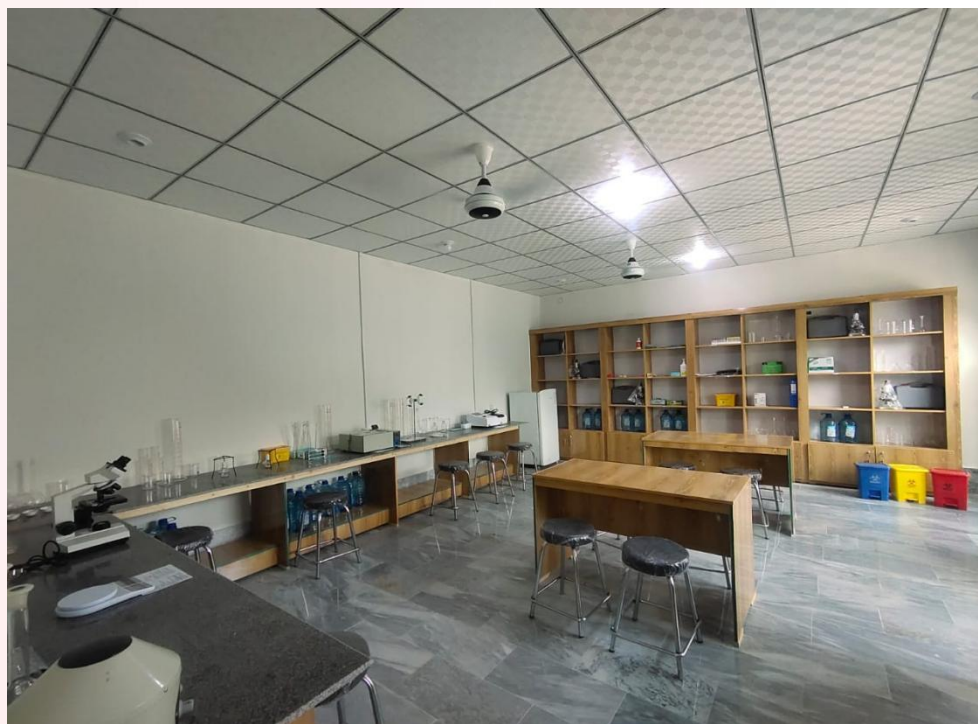
Library is fully equipped with nursing books as recommended by KPBTE, also facility available for Digital Library. Students can utilize library and its resources according to NOBLE COLLEGE Library Policy.





SCIENCE LAB:

Science Lab is fully equipped with all necessary equipment's and chemicals for practical activities



HOSPITAL & COMMUNITY BASED CLINICAL FACILITY:

NOBLE COLLEGE is affiliated with Saidu Group of Teaching Hospitals (SGTH) for clinical facilities, which is tertiary care teaching hospital and located just in front of the College.



ANATOMY LAB

Anatomy Lab is equipped with all the necessary models.



BIOMEDICAL LAB

Biomedical Lab is equipped with all the necessary models.



SPORTS/EXTRA CO-CURRICULAR ACTIVITIES

- Annual sports week will be organized each year.
- Students will have recreational tours to different areas of Pakistan depending upon the feasibility and security situations. Students
- will organize welcome parties, get-togethers, Eid-Milan etc.

Note: The dates and venues for the above activities will be decided by the Noble College management according to suitability of time & feasibility in the prevailing circumstances



TUTORIAL ROOM & STUDENTS' LOUNGE

One students' lounge and a tutorial room are available for group activities for the students



NOBLE COLLEGE ADMISSION POLICY AND PROCEDURE



Our admission policy is fair, transparent, and merit-based, welcoming eligible applicants based on seat availability and institutional criteria.

- **Admission Announcement:** The announcement is advertised through various social media platforms for wider reach.
- **Application Submission:** Submit a completed application form with required documents before the deadline.
- **Eligibility Check:** Academic qualifications and entrance exam scores (if applicable) will be verified.
- **Entrance Test/Interview:** Applicants are required to pass the entrance test and interview as per program requirements.
- **Merit-Based Selection:** Admission is granted based on academic performance, entrance test results, interview and seat availability.
- **Final Enrollment:** Selected candidates must complete fee payment and document verification and registration process.

Quality Assurance for Students

We ensure academic excellence through:

- **Curriculum Standards:** Regular updates to meet industry and educational requirements.
- **Faculty Development:** Training programs for continuous improvement.
- **Student Assessments:** Periodic evaluations, exams, and feedback systems.
- **Support Services:** Counseling, mentorship, and career guidance.
- **Accreditation & Reviews:** Compliance with educational standards and regular quality audits.

Administrative and Technical Support for Quality Assurance

We provide strong support through:

- **Administrative Support:** Efficient teams managing curriculum, student services, and accreditation.
- **Technical Support:** Advanced tools for learning, data analysis, and performance tracking.
- **Quality Monitoring:** Regular audits and feedback for continuous improvement.
- **Faculty Support:** Ongoing development and teaching resources.

GENERAL POLICIES

Noble College of Nursing & Medical Sciences is committed to maintaining high academic, ethical, and professional standards. All policies follow the regulations of the Khyber Pakhtunkhwa Board of Technical and Commerce Education (KPBTE), and other relevant authorities.

1. **Academic Responsibility** – Students are responsible for their learning, attendance, and timely completion of academic requirements.
2. **Attendance** – A minimum of 75% attendance in theory and clinical/practical sessions is mandatory for examinations.
3. **Code of Conduct** – Discipline, respect for faculty and peers, and upholding the dignity of the nursing profession are essential.
4. **Dress Code** – Prescribed uniform must be worn during academic and clinical sessions. Modest and decent dressing is required at all times; tight trousers, jeans, flashy colors, or inappropriate prints are not allowed.
5. **No Smoking Zone** – The entire campus, including classrooms, labs, lounges, and washrooms, is strictly smoke-free.
6. **Food & Drinks** – Eating and drinking are prohibited inside classrooms, labs, tutorial rooms, and the library.
7. **Mobile Phones** – Mobile phone use is not allowed in classrooms or clinical areas. Confiscated devices may be held for one week.
8. **Politics & Media** – Students must not engage in political activities or unauthorized communication with media on behalf of the College or Hospital.
9. **Visitors & Communication** – Visitors are not allowed without prior permission. Students may not use the Admin Office phone for personal calls.
10. **Assessment & Examinations** – Internal and final exams will be held as per KPBTE regulations.

GENERAL POLICIES

11. **Use of Facilities** – Laboratories, the library, and computer resources are strictly for academic purposes and must be used responsibly.
12. **Fee Policy** – Fees and dues must be paid on time; otherwise, enrollment may be suspended and results withheld.
13. **Practical Training** – Clinical training at Saidu Group of Teaching Hospitals (SGTH) and other affiliated institutions is compulsory.
14. **Zero Tolerance** – Harassment, substance abuse, cheating, or misconduct will result in strict disciplinary action.
15. **Continuous Improvement** – The College reserves the right to review and revise policies, programs, and regulations when necessary.
16. **Professional Attributes** – Students must embody the values of nursing through appropriate behavior, attitude, and attire.
17. **Honesty & Discipline** – High standards of honesty, morality, and discipline are expected at all times.
18. **Respect for Community** – Students must respect the rights and dignity of peers, faculty, hospital staff, and the wider community. Any act harming the reputation of the College or disrupting academics is prohibited.
19. **Tolerance & Understanding** – Respectful and open dialogue is encouraged in case of disagreements.
20. **Cross-Gender Interaction** – Students must maintain courtesy, professionalism, and cultural sensitivity in all interactions. Harassment in any form will not be tolerated.

Board of Directors

Noble College of Nursing and Medical Sciences

Disciplinary Offenses & Zero Tolerance Policy

The following acts are strictly prohibited and will invite disciplinary action, including suspension, expulsion, or legal proceedings:

1. Damage, theft, or misuse of College/Hospital property.
2. Unauthorized housing, rallies, or demonstrations.
3. Possession or use of firearms, drugs, alcohol, or contraband.
4. Violence, misbehavior, or verbal/physical assault.
5. Sexual or other forms of harassment.
6. Cheating, plagiarism, or unfair means in academics.
7. Involvement in criminal activities.
8. Substance abuse or smoking on campus.
9. Disrespecting faculty, staff, or hospital supervisors.
10. Misuse of technology or social media against College interests.

Zero Tolerance

The College maintains **zero tolerance** for aggression, any type of harassment, substance abuse, and academic dishonesty.

ATTENDANCE POLICY

In compliance with the regulations of the KPBTE, this attendance policy applies to all enrolled students. Adherence to these rules is mandatory for academic and clinical progress.

1. Attendance requirements:

Mandatory attendance: Students must attend all scheduled academic and clinical activities, including lectures, tutorials, seminars, practicals, ward assignments, and examinations.

Examination eligibility: A minimum of 75% attendance in each individual subject is compulsory for a student to be eligible for examinations, as per KPBTE regulations.

Ineligibility consequence: Students with less than 75% attendance in any subject will be barred from taking its examination.

2. Absence regulations:

Absence margin: The 25% allowance for absences is intended to cover approved medical issues or emergencies. It is not for personal events such as weddings, family occasions, or maternity leave.

Leave applications: All leave requests must be submitted in writing through the academic coordinator for the Principal's approval. Medical leave requires a valid medical certificate.

Unapproved absences: Uninformed leave or leave without proper prior approval will be considered unexcused.

ATTENDANCE POLICY

3. Punctuality:

Tardiness: Arriving within 10 minutes of a session's scheduled start time will be marked as "Late." Arriving more than 10 minutes late will be marked as "Absent".

Accumulated tardiness: Three late arrivals will be counted as one full absence.

Unauthorized departure: Leaving a session or ward without permission from the supervising teacher will be marked as an absence.

4. Disciplinary action:

Zero marks: A zero grade will be awarded for any tests, assignments, or graded presentations missed due to unapproved absences.

Prolonged absence: Any student absent for two consecutive weeks without permission or justification will face strict disciplinary action, which may include suspension or termination of enrollment.

Disciplinary grounds: Negligence of duties, irregularity, or breaches of discipline reported by supervising teachers may also result in disciplinary action.

CLINICAL POLICIES

1. Clinical Attendance and Punctuality:

- Students must attend all scheduled hospital and community-based clinical rotations.
- 100% attendance is expected. Up to 10% absence may be made up per semester for emergencies or illness.
- Missed hours must be remediated in consultation with supervising faculty.

2. Clinical Make-up Policy:

- **Informed absence:** One make-up clinical duty + clinical assignment.
- **Uninformed absence:** Two make-up clinical duties + clinical assignment.
- **Tardiness:** Three late arrivals (within 10 minutes) count as one absence, requiring one make-up duty.
- **Illness:** Submit medical certificate; one make-up duty required.

3. Professional Conduct and Patient Safety:

- Unsafe or unethical behavior will lead to disciplinary action.
- Process includes: Incident Form, formal hearing, and corrective/disciplinary measures.
- Serious misconduct may result in dismissal from the program.

4. Dress Code and Appearance:

- Male: Grey scrub uniform with black shoes.
- Female: Brown kamiz & shalwar, white dupatta, black shoes.

- Headscarves: Plain white only. No colorful scarves.
- Winter: Only black sweater allowed.
- Community visits: Neat shalwar & kamiz with closed-toe shoes.
- College ID must be visible at all times.
- Non-compliance results in fine and dismissal from clinical/class session.

5. Personal Hygiene and Accessories:

- Maintain high hygiene standards: clean, short, unpolished nails; no strong perfumes.
- No jewelry except one pair of small studs. Tattoos must be covered.
- Carry essential supplies: red & black pens, pencil, eraser, scissors, nail cutter, inch tape, stethoscope, pen torch.

6. Reporting and Accountability:

- Students with symptomatic illness must inform the instructor and may be dismissed to prevent infection spread.
- Doctor's clearance may be required before return.
- Report illegal, unethical, or unprofessional behavior immediately to faculty.

Note: Any student who does not follow the prescribed Dress Code (Clinical, Classroom, or Community) will be fined and will not be allowed to attend the clinical, lecture, or lab session.

DRESS CODE (Classroom & Labs)

Female Students:

Brown kamiz, white shalwar, white dupatta

Black shoes with black socks

Brown coat/sweater in winter

Male Students:

White shirt, grey pants, black tie, simple black belt

Black shoes with black socks

Brown coat/sweater in winter

General Rules:

Hair must be neat and above the collar (simple black, brown, or white clips/bands for females).

No nail polish, mehendi, or dark makeup allowed (mehendi only with written permission for ceremonies).

Only one pair of small stud earrings permitted.

Noble College ID card must be worn at all times with the uniform.

Lab Sessions (Biochemistry/Microbiology): White lab coat over classroom uniform.

Note: Students violating the dress code will be fined and barred from attending class, lab, or clinical sessions.

FEE POLICY

Noble College of Nursing and Medical Sciences is committed to ensuring transparency and fairness in all financial matters.

The following rules govern the payment, refund, and default of student fees:

1. **Payment of Fees:** All students must pay their fees/dues within the first 10 days of each semester, as notified by the Accounts Department and Principal.

If unable to pay on time, the student must seek **written permission from the Principal** for an extension.

A fine of **Rs. 100 per day** will be charged after the due date.

2. **Default in Payment:** If dues remain unpaid two weeks after the extended date, the student will:

Be barred from attending classes, labs, and clinical sessions.

Ultimately have their name **struck off from the college rolls**.

3. **Refund Policy:** Refunds apply only to tuition fees and mandatory registration charges, under the following conditions:

- a) **Before or within 15 days of commencement of classes** – 50% tuition fee + KPBTE registration, university retention fee will be refunded.
- b) **After 15 days of commencement of classes** – Only KPBTE registration, university retention fee will be refunded **if registration has not been forwarded** to KPBTE.
- c) Once registration has been sent to **KPBTE**, the student is liable to pay the **tuition fee for all remaining semesters**, even if they withdraw.

4. **Examination Clearance:**

All dues must be cleared **before submission of examination forms** to KPBTE.

Students with outstanding dues will not be allowed to appear in exams.

NOBLE COLLEGE SCHOLARSHIP POLICY

Noble College of Nursing and Medical Sciences offers scholarships and fee concessions to deserving students of the DAE Biomedical Technology (Three-Year Program) in accordance with Khyber Pakhtunkhwa Board of Technical Education (KPBTE) rules and regulations, subject to availability of funds.

1. Open Merit Scholarship:

Open merit scholarships are awarded at the time of admission on the basis of **SSC (Science) marks**, strictly as per **KPBTE admission policy**:

1st Position: Up to 100% tuition fee concession

2nd Position: Up to 75% tuition fee concession

3rd Position: Up to 50% tuition fee concession

Open merit scholarships are valid for **one academic session only** and continuation is subject to satisfactory academic performance and discipline.

2. Orphan Students:

Fee concession/scholarship is granted to **orphan students** as per **KPBTE rules**, on submission of a **valid orphan certificate** issued by a competent authority.

General Conditions

Scholarships are subject to **minimum prescribed attendance, satisfactory academic progress, and good conduct**. The institution reserves the right to **withdraw or transfer** the scholarship in case of failure, shortage of attendance, or violation of college/KPBTE rules.

LIBRARY POLICY OF NOBLE COLLEGE

The Noble College Library is a learning hub designed to support academic excellence. All students are required to follow the rules below to ensure proper use of resources:

1. Membership & Access:

- Students must register for library membership before using library services.
- A **valid library card** must be presented for all book issuance's.

2. Borrowing Rules:

- A maximum of two books (different titles) may be issued at a time for one week only.
- Books cannot be re-issued immediately after return.
- Overdue books will incur **a fine of Rs. 50 per book per day.**
- Reference material (newspapers, journals, magazines, brochures, reviews, and stamped "REFERENCE" books) is for **in-library use only.**

3. Care & Responsibility:

- Students must check books for damage at the time of issuance; any existing damage should be reported to the librarian.
- Borrowers are responsible for any loss or damage to books.
- Lost books must be replaced with the same edition within one week, or the **double cost** will be charged.
- Marking, writing, highlighting, tearing, or mutilation of books will be treated as a serious offense.

4. Conduct in the Library:

- Silence must be maintained at all times; **talking, eating, and mobile phone use are prohibited.**
- Personal belongings such as bags and purses are not allowed inside the library.
- Students must sign against each issued book in the lending record.
- All dues and fines must be cleared on time; failure to do so may result in suspension from library, classroom, or clinical activities.

COMMITTEES IN NOBLE COLLEGE OF NURSING AND MEDICAL SCINECES

To ensure effective governance, discipline, and transparency, Noble College has established the following committees:

1. Admission Committee:

- Principal, Noble College – Chairperson
- Vice Principal – Member
- Program Coordinator – Member
- Academic Coordinator – Member

Terms of Reference:

- Guide clerical staff in proper handling of admission forms.
- Verify eligibility of candidates applying for programs.
- Ensure transparency throughout the admission process.
- Finalize the list of selected candidates strictly on merit.
- Recommendations of the committee will be considered final.

2. Disciplinary Committees:

a. Committee for Minor Infractions

- Vice Principal – Chairperson
- Senior Faculty – Member
- Clinical Faculty – Member
- Concerned Year Coordinator – Member

Examples of Minor Infractions:

- Absenteeism and irregularities.
- Defamation of the institution or profession.
- Plagiarism or misuse of resources.
- Minor damage to college property.

Action:

- Up to three written warnings.
- If no improvement, the case will be escalated to the Major Infraction Committee.

b. Committee for Major Infractions

- | | | |
|------------------------------|---|-------------|
| ● Project Director | – | Chairperson |
| ● Principal | – | Member |
| ● Senior Faculty | – | Member |
| ● Concerned Year Coordinator | – | Member |

Examples of Major Infractions:

- Theft, misconduct, or malpractice.
- Involvement in strikes or political activities.
- Unethical or abusive behavior with patients/staff.
- Substance abuse, harassment, or sexual abuse.
- Cheating in examinations, medication errors, or suicide attempts.

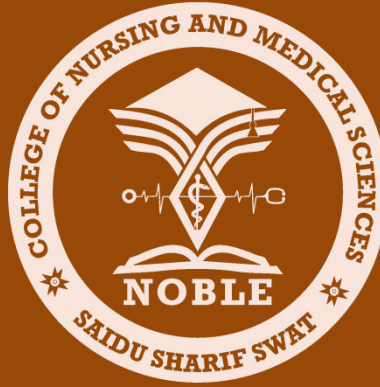
Disciplinary Action Procedure:

- Written complaint submitted to the Chairperson.
- Student given an opportunity to submit a written defense.
- Committee decision based on evidence and facts.

Possible Penalties:

- Written warning or monetary fine.
- Statement of assurance from parents/guardians.
- Withholding from examinations or freezing of the academic year.
- Termination from the program.
- Permanent blacklisting from the institution.





NOBLE COLLEGE OF NURSING AND MEDICAL SCIENCES

SAIDU SHARIF, SWAT.

DEPARTMENT: BIOMEDICAL ENGINEERING

College Location:

Haji Abad, Opposite Saidu Police Station,
Behind, Saidu Hospital (SGTH),
Near, Naveed Hospital.

Website : www.noble.edu.pk

Email: info@noble.edu.pk

Gmail: info.noblecollege@gmail.com

Contact No: +92 335 9503355